



GMT MONTHLY MEMBERSHIP PROGRESS REPORT

Results as of: 8/31/2024

Multiple District 25

LOCATION: INDIANA

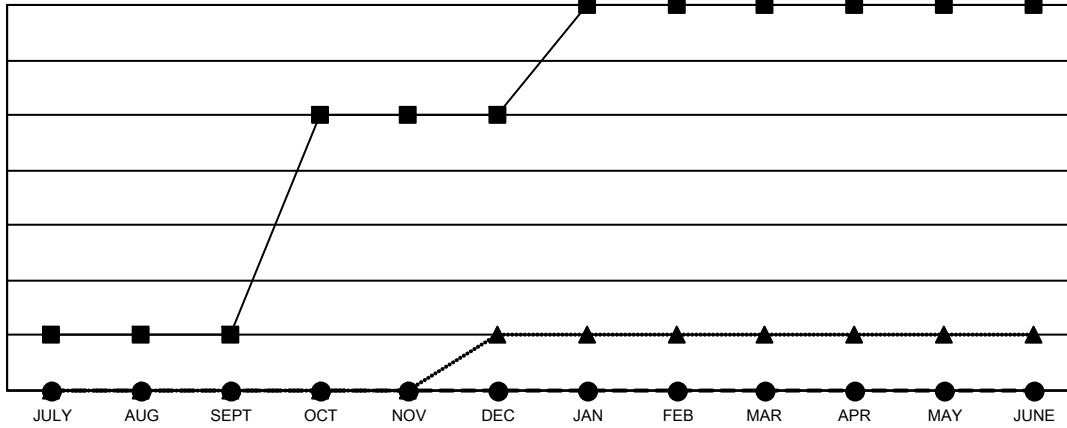
GMT: OPEN

GMT CA 1

Clubs			
RESULTS FOR 2024-2025			
QUARTER	NEW CLUB GOAL	NEW CLUBS	DROPPED CLUBS
JULY/AUG/SEPT	1	0	1
OCT/NOV/DEC	4	0	0
JAN/FEB/MAR	2	0	0
APR/MAY/JUNE	0	0	0

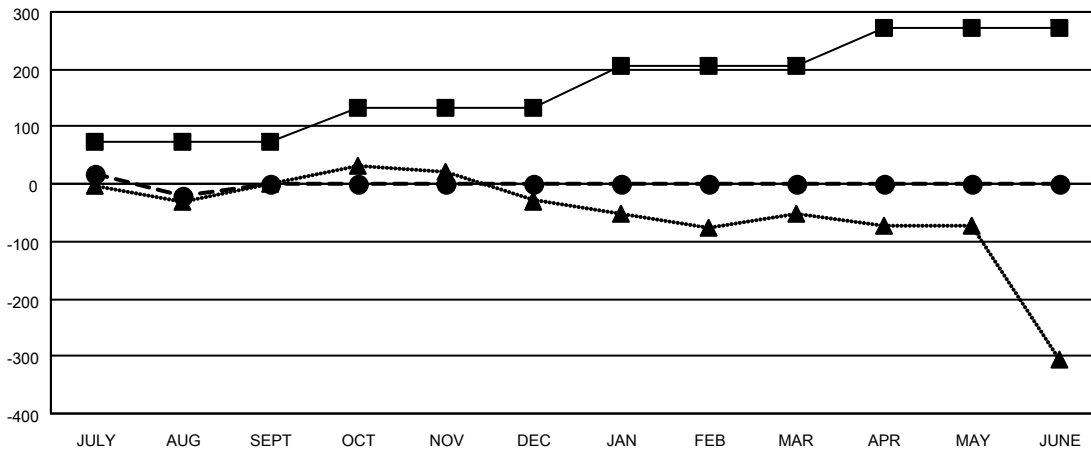
Members			
RESULTS FOR 2024-2025			
QUARTER	MEMBER GROWTH NET GOAL	MEMBER GROWTH ACTUAL	DROPPED MEMBERS ACTUAL (including transfers)
JULY/AUG/SEPT	75	109	107
OCT/NOV/DEC	58	0	0
JAN/FEB/MAR	73	0	0
APR/MAY/JUNE	67	0	0

GOALS AND ACTUAL NEW CLUBS CUMULATIVE



- - CURRENT YEAR GOALS FOR NEW CLUBS
- - CURRENT YEAR ACTUAL NEW CLUBS
- ▲ - LAST YEAR ACTUAL NEW CLUBS

GOALS AND ACTUAL MEMBERS CUMULATIVE



- - MEMBER GROWTH NET GOAL
- - MEMBER GROWTH ACTUAL
- ▲ - LAST YEAR MEMBERSHIP ACTUAL

DROPPED CLUBS: 1	50 CLUBS OF 323 ADDED 1 OR MORE NEW MEMBERS	GENDER DISTRIBUTION MALE 5,415 (67.87%) FEMALE 2,563 (32.13%)
DROPPED MEMBERS DECEASED 16 CLUB CANCELLED 0 OTHER 88 TOTAL 104	CLICK HERE FOR CUMULATIVE MEMBERSHIP DATA	TOTAL FAMILY UNIT MEMBERS 2,016 FAMILY MEMBERS PAYING HALF DUES 1,038